



SOCIAL VENTURES

Supporting the mission of Search360

Planet Access

**Disability Awareness
Trainings**

NeurodiVERSED

**Hop on the Bus to
Independence Workshop**

Visibility Arts



ABOUT SEARCH360

Search360 is a community-based nonprofit. Our programs serve more than 350 individuals and their families annually in the Chicagoland area. Search has provided high-quality services and supports for individuals with intellectual and developmental disabilities since 1968.

Services include supported living arrangements, adult learning and employment programs, as well as medical and behavioral services.

Search's Social Ventures are invested directly back into services for people with intellectual and developmental disabilities.

Our trainings help organizations adopt disability-aware practices and offer free workshops that teach people with disabilities how to use public transportation safely and independently.

WE LOOK FORWARD TO CONNECTING WITH YOU!



OUR SOCIAL VENTURES



**PLANET ACCESS
STORE**



**DISABILITY
AWARENESS
TRAININGS**



**NEURODIVERSED
WORKSHOPS**



**HOP ON THE BUS TO
INDEPENDENCE WORKSHOP**



VISIBILITY ARTS

SOCIAL VENTURES

Frequently Asked Questions

WHAT IS A SOCIAL VENTURE?

A social venture, also called a social enterprise, is a mission-driven business that uses its profits to create positive social change. At Search360, our social ventures blend business with purpose by creating employment opportunities for people with disabilities and generating revenue to support our programs.

HOW DO SOCIAL VENTURES SUPPORT SEARCH?

Social ventures directly support Search by providing meaningful, inclusive jobs for adults with intellectual and developmental disabilities (I/DD) and by generating unrestricted revenue that helps fund essential services and innovative programming across our organization.

WHY SUPPORT SEARCH'S SOCIAL VENTURES?

When you support Search's social ventures, you're doing more than making a purchase - you're investing in a more inclusive world. Every dollar spent helps create jobs, amplify the talents of people with disabilities and sustain programs that empower individuals to live rich, independent lives.





PLANET ACCESS STORE

Planet Access is a unique, high-end retail store with a mission. All purchases made at the store support the programs of Search360, which empower adults with intellectual and developmental disabilities to achieve their full potential.

Through our partnership with Toad&Co, we offer premier brands that specialize in sustainable, socially responsible clothing, jewelry and home decor. Planet Access carries brands that tell a story – whether that’s a story of social good, a story of a local Chicago artisan or a story of a brand that is dedicated to eco-sustainability. All of these stories have one thing in common, a goal to make the planet a better place for everyone to live, learn, work and play.

Planet Access is a Toad&Co partner store. Toad&Co is not in the business of making clothes – it’s in the business of change. Toad&Co aims to clean up a dirty apparel industry, educate people on sustainable practices and inspire folks to live their fullest lives. From their California headquarters to their storefronts across the country, they are doing their part to be good neighbors everywhere you find the Toad.

VISIT US!

Planet Access | 4727 N. Lincoln Ave
Chicago, IL 60625
(773) 754-8176



Follow us on Facebook
PlanetAccessCo.Store



Follow us on Instagram
PlanetAccess



Follow us on TikTok
PlanetAccessStore



DISABILITY AWARENESS TRAININGS

Disability Awareness Trainings teach organizations to integrate disability-aware customer service and employment practices into core business strategies. The Players are a dynamic and interactive troupe of people with disabilities. Led by our Players, a team of self-advocates with lived experiences. Established in 2009, the Players have trained more than 20,000 individuals at businesses, theaters, libraries, schools, trade associations, nonprofit organizations and corporations to communicate comfortably and confidently with prospective hires, customers and current employees who have disabilities.

“I think these are essential skills and knowledge for creating an open and accepting workplace and positive experience for all visitors.”

Audience Member at a Disability Awareness Training

PREVIOUS PLACES TRAINED:

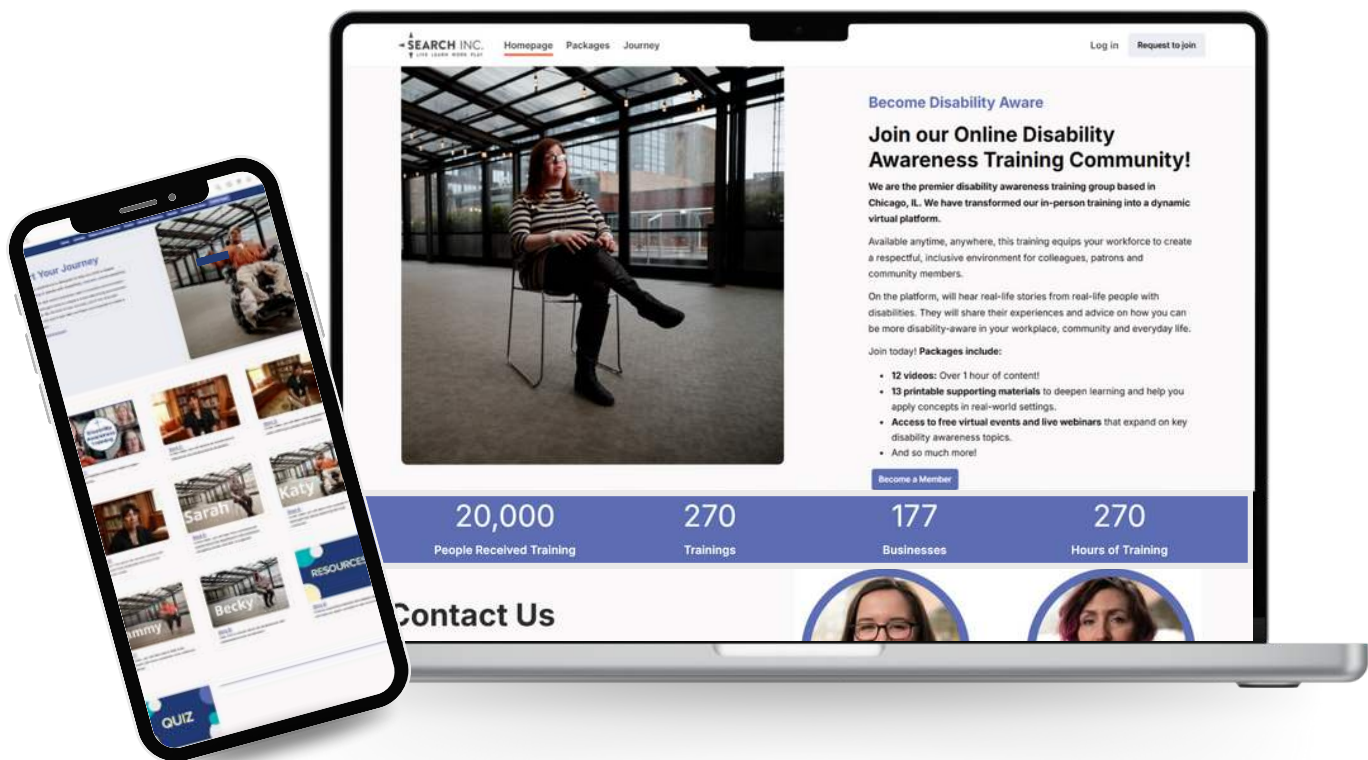
Lincoln Park Zoo, Argonne National Laboratory, Chicago History Museum, Beam Suntory, Eicoff, Field Museum, Brookfield Zoo, Shedd Aquarium, Goodman Theater, Discover Financial Services, Inc., Loyola Academy and many more!

WANT TO HOST A DISABILITY AWARENESS TRAINING?

Email CommunityEducation@Search360.org to request a training.

SCAN TO LEARN MORE!





DISABILITY AWARENESS ONLINE TRAINING PLATFORM

The launch of our new online training platform, www.disabilityaware360.org, now offers accessible, on-demand disability awareness training - anytime, anywhere. Our training is led by people with disabilities sharing their real stories, designed to equip your workforce to build a respectful, inclusive environment for colleagues, patrons and community members.

Join today to access:

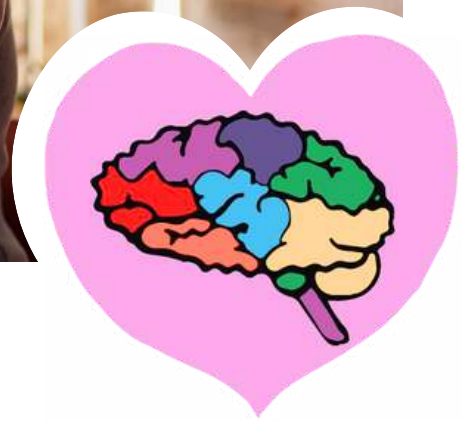
- 12 videos (1+ hour of content)
- 13 printable supporting materials to deepen learning and help you apply concepts in real-world settings
- Access to free virtual events and live webinars that expand on key disability awareness topics
- And so much more to come!

Our goal? To empower your team with the skills and confidence to interact comfortably with people with disabilities!



VISIT OUR PLATFORM





NEURODIVERSED WORKSHOPS

NeurodiVERSED originated from an annual campaign held every year in March during National Developmental Disabilities Awareness Month, designed to give people who think differently a platform where they can share their voices and educate the community on mental health and intellectual disabilities.

The workshops are created to address the misconceptions and misinformation surrounding those who identify as neurodivergent, as well as the damaging narrative that mental illness and disabilities are something to be cured. Our mission is to give neurodiverse people a platform to share their stories, art, experiences and celebrate the things that make them unique. NeurodiVERSED is led by self-advocates who share their lived experiences with the broader community.

PREVIOUS PLACES TRAINED:

Al Raby High School, Association of Rehabilitation Facilities (IARF) Conference, Muchin College Prep, Toad and Co., Metropolitan Family Services, Pierce School, Chicago Public Library, Hyde Park Art Center and more.

WANT TO HOST A NEURODIVERSED WORKSHOP?

Visit our website at www.Search360.org or email CommunityEducation@Search360.org.



HOP ON THE BUS TO INDEPENDENCE WORKSHOPS

Hop On The Bus to Independence (HOTB) Workshops are offered in partnership with Pace Suburban Bus. These FREE workshops help people with disabilities build skills to independently and safely use fixed-route public transportation. Since 2012, more than 4,500 students and adults with disabilities have built their public transportation skills through this fun, interactive experience.

The new skills learned in HOTB workshops support participants to live and work in the community. In the most recent year, 100% of participants increased their knowledge of waiting for, getting on and getting off the bus.

PREVIOUS PLACES TRAINED

Illinois Department of Human Services (IDHS), Taft High School, Center for Enriched Living, Adventist Medical Center (AMITA), Cornerstone Services and many more!

WANT TO HOST A HOP ON THE BUS WORKSHOP?

Email CommunityEducation@Search360.org to request a training.

SCAN TO LEARN MORE!





VISIBILITY ARTS

Visibility Arts provides a space for professional and emerging adult visual artists with intellectual and developmental disabilities to explore, learn, create and show their artwork.

Visibility Arts is a combination of group learning experiences and hands-on studio time. Visibility Arts is based at Search's Adult Learning sites in Mount Prospect, Evanston and Chicago. Our Mount Prospect site has a fully equipped studio and art gallery. Visibility Artists also enjoy regular opportunities to show and sell their work in a variety of galleries and public venues, such as our social venture Planet Access. Other recent shows include Northwestern's Dittmar Gallery, Evanston's Umbrella Fest and the Toad&Co. store in Portland, Maine.



CURRENT PARTNERS

The impact of Search360's social ventures is made stronger through the generosity and partnership of our sponsors.

TOAD&CO



The Coleman
FOUNDATION



RIVERS
CASINO
DES PLAINES

comedSM
AN EXELON COMPANY

WINTRUST

Illinois
ARTS
Council

RALLA KLEPAK FOUNDATION
FOR EDUCATION IN THE PERFORMING ARTS



1%

FOR THE
PLANET



SUPERIOR
TRUSS & PANEL
INCORPORATED

RRF | Foundation
for Aging

REVADA
FOUNDATION



The Arc.
Illinois
An Affiliate of
The Arc of Illinois

pace

ECOLAB[®]



INTERSECT FOR ABILITY

Village of
SKOKIE



Nicor Gas



CONTACT US

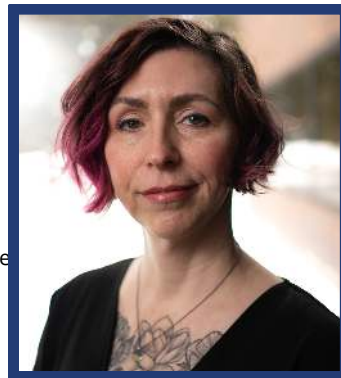
Thank you for taking the time to learn about our social venture portfolio at Search! We are excited about the opportunity to connect with you.

Please contact us to learn more and to get connected with our social venture offerings.



GRACE LIPSCOMB

Senior Director of Social Venture
Development
glipscomb@Search360.org
773-305-5000 x55



TINA ZEMEN

Visibility Arts & Community
Education Division Manager
tzemen@Search360.org
773-603-0790

CONNECT WITH US



Follow us on Facebook
www.facebook.com/Search360



Follow us on Instagram
www.instagram.com/Search360org



Follow us on YouTube
www.youtube.com/Search360



Follow us on LinkedIn
www.linkedin.com/Search360



Visit our website
www.Search360.org





Social Ventures are a part of Search360, a nonprofit organization under section 501(c)3 of the Internal Revenue Code. Search is a founding member of the Keystone Alliance. Search has provided services to individuals with intellectual and developmental disabilities and their families for over 50 years. Contributions to Search are tax deductible.

Search is licensed by the Illinois Department of Human Services. Search is accredited by the Council on Quality and Leadership. Search does not discriminate on the basis of race, color, religion, national origin, ancestry, age, sex, marital status, sexual orientation, disability or military status.

